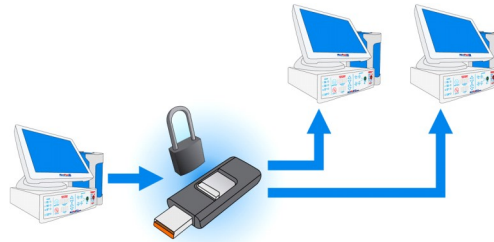


Configuration Management Kit MP3372

for EPS320 Cardiac Stimulator Family
EPS320, StimCor™ & StimLab™



This document describes how to use the Micropace Multi-Stimulator Configuration Management Tool (MP3371). Please read this document in its entirety prior to use.

Ver 1.2, Rx Only
Micropace Pty Ltd
41/159 Arthur Street
Homebush West, NSW 2140 Australia
MP Part: MP3373,
R_MP3373 Configuration Management Kit Instruction Leaflet V1.2.pub, Date 03/04/2017
Also available for download at www.micropaceep.com/downloads.html

Introduction

This MP3371 Multi-Stimulator Configuration Management Tool (MSCM Tool) is a USB key with custom software. It may be used for:

- Backing up one set of Micropace stimulator configurations.
- Cloning configurations from/to one or many stimulators with compatible software.
- Converting Stimulator settings from a lower to higher version of software and vice versa.

This tool is compatible with EPS320, StimCor™, StimLab™ systems running the following software versions:

- V3.20.09 (SR3.1)
- V3.20.11 (SR4.1a)
- V3.21.04
- V3.21.05 (SR1)

Configuration data can be exported from and imported into systems according to table below:

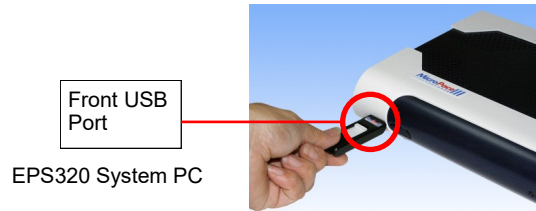
Table: Export / Import Compatibility Matrix

	Import to Bona PC with Software versions				
Exported Version to USB Key	3.19.59 or earlier	3.20.09 (SR3 / SR3.1)	3.20.11 (SR4 / SR4.1)	3.21.04	3.21.05 (SR1)
3.20.09 (SR3 / SR3.1)		✓	✓	✓	✓
3.20.11 (SR4 / SR4.1)		✓	✓	✓	✓
3.21.04		✓	✓	✓	✓

How Supplied Using the MSCM Tool

Configuration Management Kit - MP3372	
Item	Part No.
USB Import Export Tool	MP3371
Configuration Import Export Booklet (This booklet)	MP3373

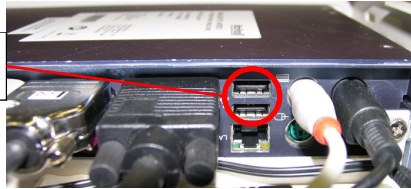
1. Ensure that no patient is connected to the stimulator.
2. Plug the MSCM USB key into the USB port of a Micropace system PC. Below are three pictures of EPS320, StimCor™ and StimLab™ systems showing where the USB Tool should be inserted into the PC.



Front of StimCor™ or StimLab™ Computer Cabinet



Rear USB Port

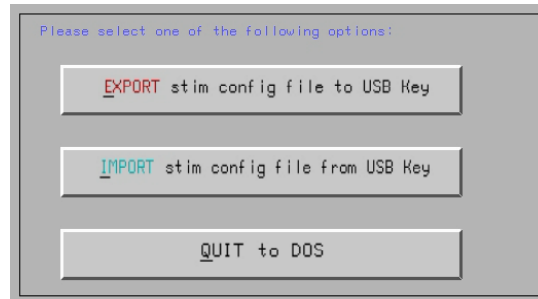


Inside StimLab™ Computer Cabinet showing rear of PC (for older StimLabs with no external USB slot)

3. Reboot the computer by pressing On/Off Switch of PC.

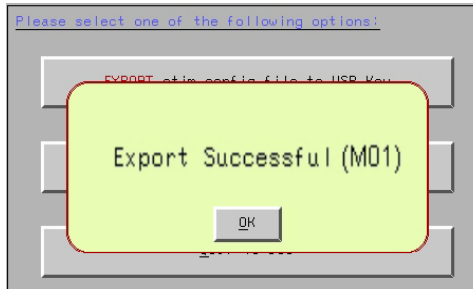
```
Detected a compatible device USB Drive...  
Please choose the following options:  
1. Auto run installation from USB Drive (Authorised representative only)  
2. Restart the EP320 Stimulator (Please remove any USB device)  
Choose an Option [1,2]?
```

4. On boot, you will see a display as pictured.



5. Select option "1. Auto run installation from USB Drive". Ignore the "Authorised representative only" message.

6. You will then see the following Menu - Configuration Management Tool



Backup / Export Stimulator configuration

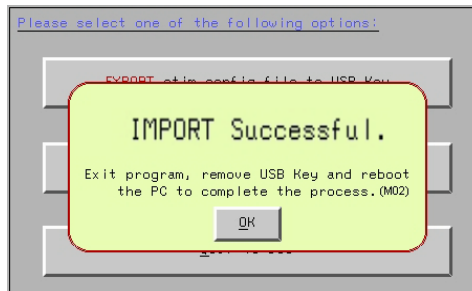
To backup configuration data to the USB:

1. Follow the steps in the section "Using the MSCM Tool" above.
2. On display of the STIM Configuration File Migration Manager Menu, press the EXPORT button.
3. It shall prompt you to overwrite if there are existing STIM configuration files on the USB Key.
4. Once the EXPORT is complete, you will see the prompt as pictured.
5. Press OK and in the Menu, press the QUIT to DOS button.
6. When prompted to, please remove the USB Key.
7. Store the USB Key in a cool dry safe environment.
8. Reboot the Computer to restart normal operation.
9. The USB key may now be stored as a backup or used to reproduce the same configuration on other Micropace Stimulators.

Restore / Import Stimulator configuration

To restore a backed up configuration to a Micropace Stimulator:

1. Follow the steps in the section “Using the MSCM Tool” above.
2. On display of the STIM Configuration File Migration Manager Menu, press the IMPORT button.
3. It shall prompt you that existing config files on the PC will be replaced. If you continue, it will start the import process.
4. Once the IMPORT is complete, you will see the prompt as pictured.
5. Press OK and in the Menu, press the QUIT to DOS button.



6. When prompted to, please remove the USB Key.
7. Store the USB Key in a cool dry safe environment.
8. Reboot the Computer and follow the onscreen instructions to complete the IMPORT process.

NOTE: When importing to a StimLab™ system with 3.21.04 software, press any key when you see the StimLab™ splash screen in order to finalise the software update process.

Cloning Configuration settings

To clone Configuration settings from one stimulator to another, follow steps in section “Backup Stimulator configuration” to backup the settings on the source PC and then follow steps in section “Restore Stimulator configuration” to restore the settings on the target computer.

Import / Cloning Verification

1. Power up the Bona PC and observe stimulator software loads and connects to the Stimulator without any unexpected errors.
2. Verify that imported settings were brought across.

Troubleshooting

Error Message	Explanation & Solution
Detected no STIM config files on Bona PC. Cannot export. (E1)	The stimulator software installed on the Bona PC does not appear to have any STIM configuration files. Please contact Micropace or your distributor to resolve this issue.
Detected no STIM config files on USB Key. Cannot import. (E2)	<p>No STIM configuration files are stored on the USB Key under the CONFIG folder.</p> <p>There are no files to be imported to the target Bona PC.</p> <p>Go to the source Bona PC and perform an export before importing to this Bona PC.</p>
The STIM software found on the PC is not compatible with this utility. CANNOT export. (E3)	<p>The STIM software installed on the Bona PC is not compatible with this configuration management tool.</p> <p>Please contact Micropace or your distributor for instructions on exporting the configuration file from your Bona PC.</p>

Error Message	Explanation & Solution
<p>Detected no STIM config files on Bona PC. Cannot import. (E5)</p>	<p>The Stimulator software installed on the Bona PC does not appear to have any STIM configuration files.</p> <p>Perform a stimulator software reinstallation on the Bona PC by following its self-restoration procedures before trying to use this tool to import again.</p> <p>Otherwise, please contact Micropace or your distributor to resolve this issue.</p>
<p>No compatible STIM software found on PC, cannot import. (E6)</p>	<p>The STIM software installed on the Bona PC is not compatible with this configuration management tool.</p> <p>Please contact Micropace or your distributor to resolve this issue.</p>
<p>No compatible STIM config files found on USB key, cannot import. (E4)</p>	<p>The STIM configuration files detected on your USB Key cannot be imported because the stimulator software on the Bona PC is not compatible with the configuration data to be imported.</p>

Disposal Instructions

Do not dispose of the MSCM Tool with unsorted household waste. Improper disposal may be harmful to the environment and human health. Please refer to your local waste authority for information on return and collection systems in your area.